

Selmo

Selmo Studio Quick-Installation - Guide

Version 1.1



Quick-Start

• Table of Contents

1. Hardware requirements.....	3
2. Download.....	4
• 2.1 Selmo Studio download.....	4
• 2.2 Fill out contact form.....	4
• 2.3 Download link.....	5
• 2.4 Download start.....	5
3. Installation.....	6
• 3.1 Selmo Studio Installer.msi.....	6
• 3.2 Setup wizard.....	6
4. Registration.....	8
• 4.1 Start Selmo Studio.....	8
• 4.2 Licence Key “from file”.....	8
• 4.3 License Key “from string”.....	9
• 4.4 Trial license activation	11
• 4.5 Trial license available	11
• 4.6 Trial license - not registered yet	12
5. Main functions.....	14
• 5.1 Main menu.....	14
• 5.2 Logic Layer.....	14
• 5.3 System Layer.....	15
• 5.4 Assembly Layer.....	15
• 5.5 PLC-Code.....	16
• 5.6 Selmo HMI.....	16
6. Usage.....	17
• 6.1 Selmo in Use.....	17
• 6.2 Selmo Download Center.....	17
• 6.3 Selmo Help Center.....	18
• 6.4 Selmo Academy.....	18
7. Imprint	19
• 7.1 Contact & Support	19

Quick-Start

1. Hardware requirements

	Minimum	Recommended
Processor	1 Ghz	2.5 Ghz+
Memory	8 GB	16 GB
Storage	1 GB free of space	1 GB free of space
Display	720p	1080p
Graphics card	DirectX 9.0 support	DirectX 9.0 support
OS	Windows 7 SP1	Windows 10 x64 1607+
Runtimes	.NET Desktop Runtime 6.0.4 ASP.NET Core Runtime 6.0.4	.NET Desktop Runtime 6.0.11+ ASP.NET Core Runtime 6.0.11+

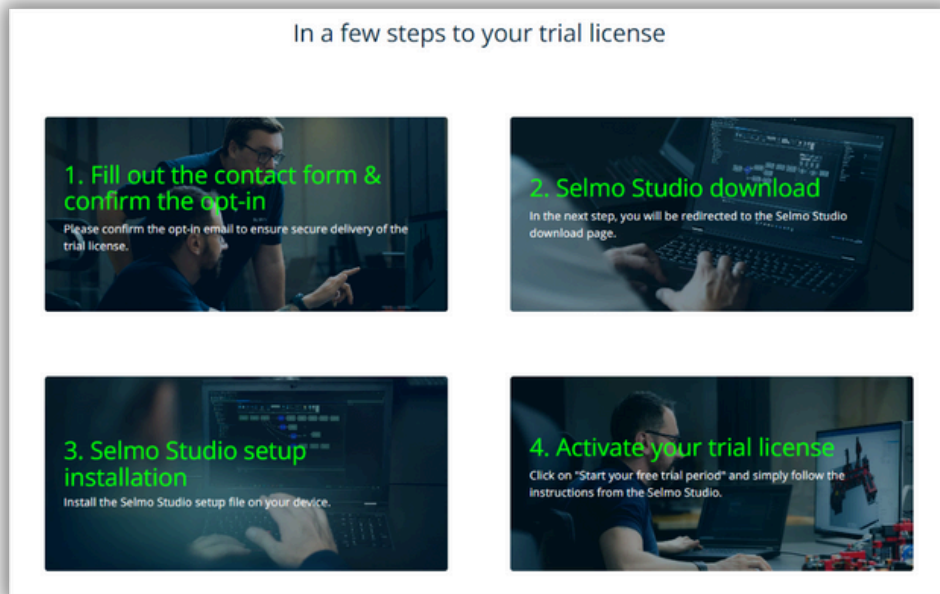
Quick-Start

2. Download

2.1 Download Selmo Studio here: [Trial license](#)

2.2 Fill out contact form


In a few steps to your trial license




- 1. Fill out the contact form & confirm the opt-in**
Please confirm the opt-in email to ensure secure delivery of the trial license.
- 2. Selmo Studio download**
In the next step, you will be redirected to the Selmo Studio download page.
- 3. Selmo Studio setup installation**
Install the Selmo Studio setup file on your device.
- 4. Activate your trial license**
Click on "Start your free trial period" and simply follow the instructions from the Selmo Studio.

Guide: How do I get a trial license?

2.3 Redirect to the Selmo Studio download page. Confirm the opt-in email.



Selmo Studio Setup
Download now and get started!



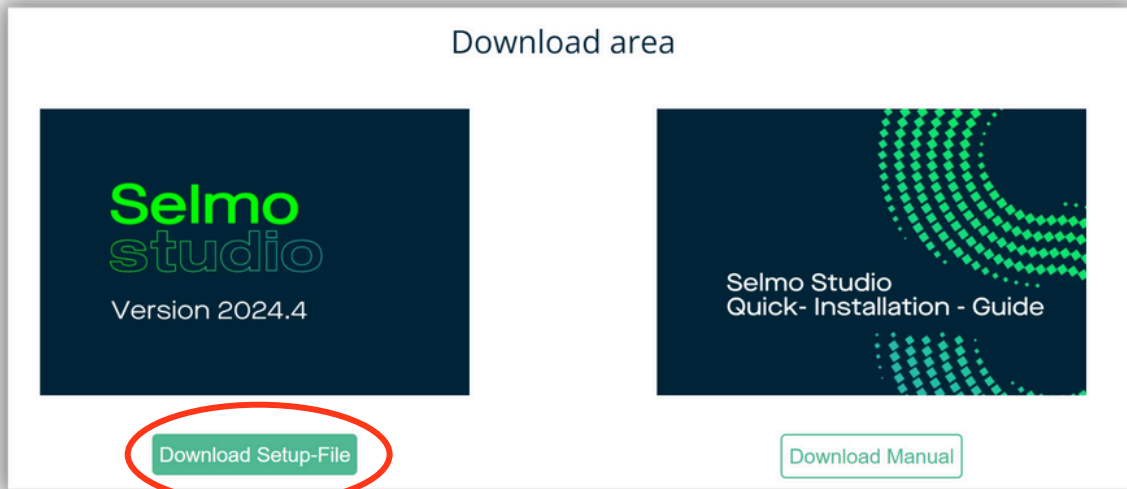
Please note that you must **download the MSI file before** using Selmo Studio.
Then your **30-day free trial period** will start.
After the trial period, you have the option of purchasing a **professional license** in our **online store**.

Please make sure to confirm the opt-in email in your inbox before using the Selmo Studio.

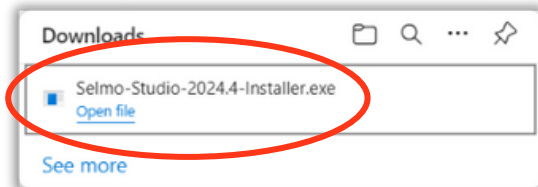
Quick-Start

2. Download

2.4 Start the download.



Selmo Studio Setup.msi download.

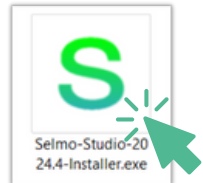


The download starts automatically.

Quick-Start

3. Installation

3.1 Run Selmo Studio Installer.msi

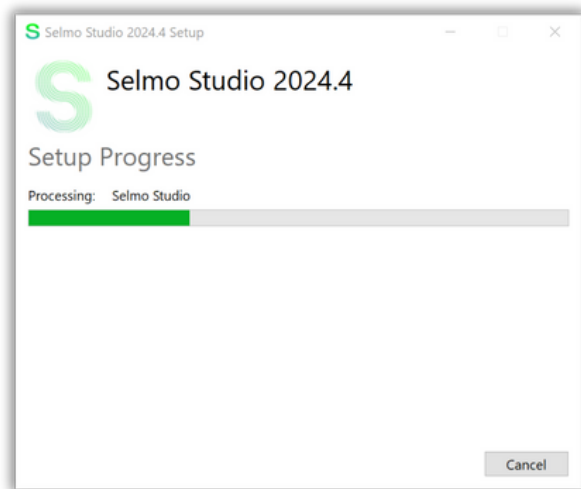


Selmo Studio Installer

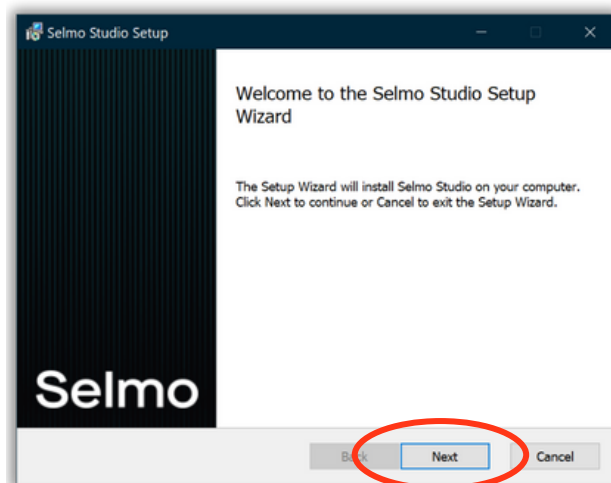
3.2 Follow the instructions in the Selmo Studio Setup Wizard



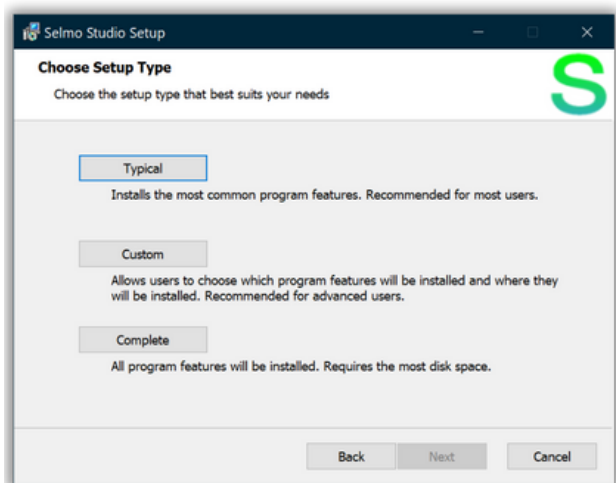
Accept the End User License Agreement and click "Install".



Preparing the installation can take a few minutes.



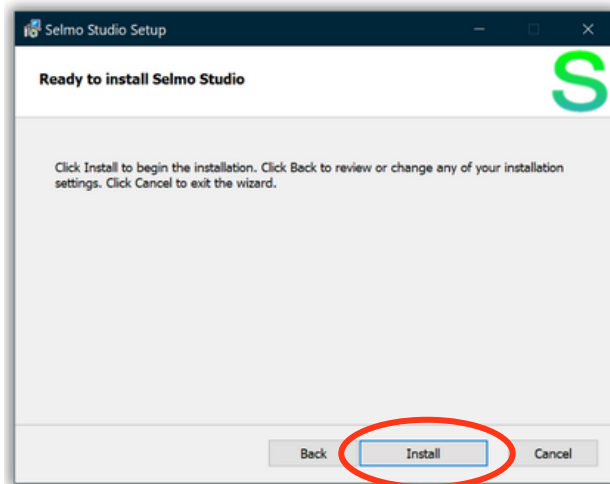
Click on "Next".



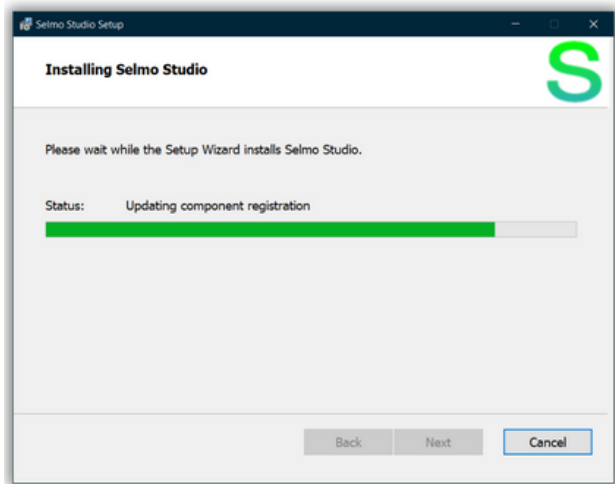
Select setup type.

Quick-Start

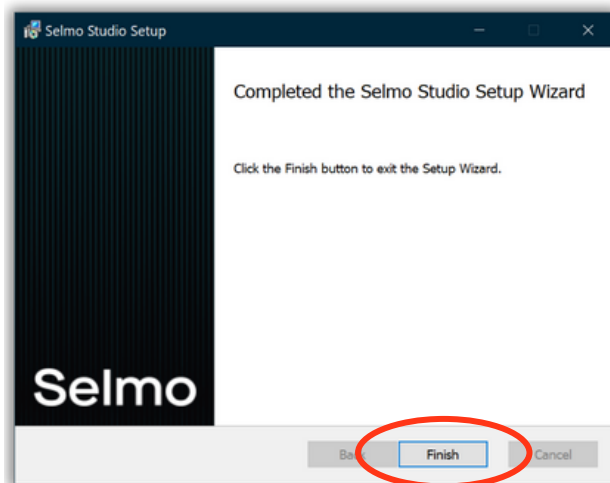
3. Installation



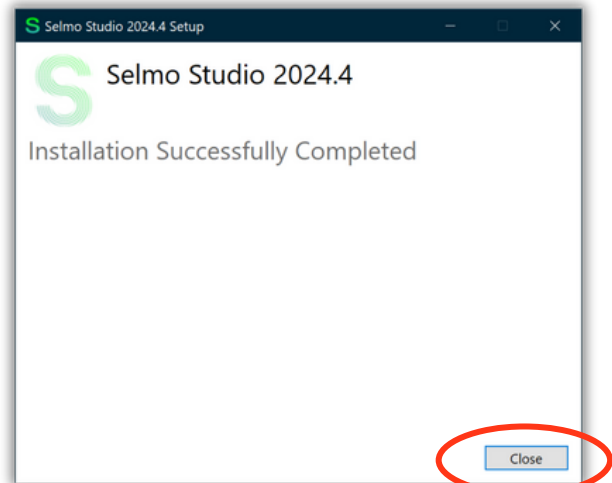
Click on "Install".



The installation can take a few minutes.



Click "Finish" to complete the installation.

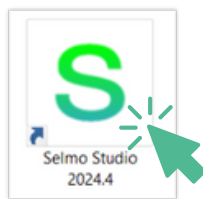


Click "Close" to complete the installation.

Quick-Start

4. Registration

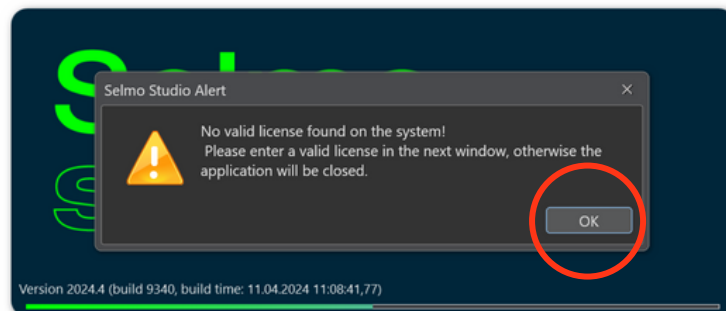
4.1 Start Selmo Studio



Selmo Studio Desktop Icon

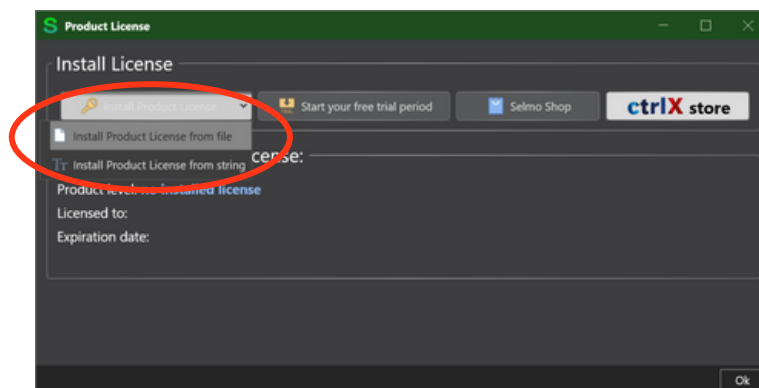


Loading Screen



When using the product for the first time, you have to activate it with a license key.

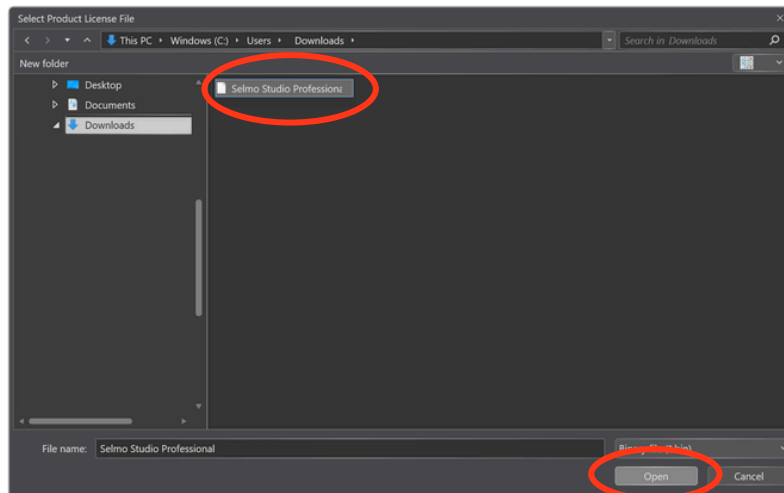
4.2 License key activation option 1: "Install Product License from file"



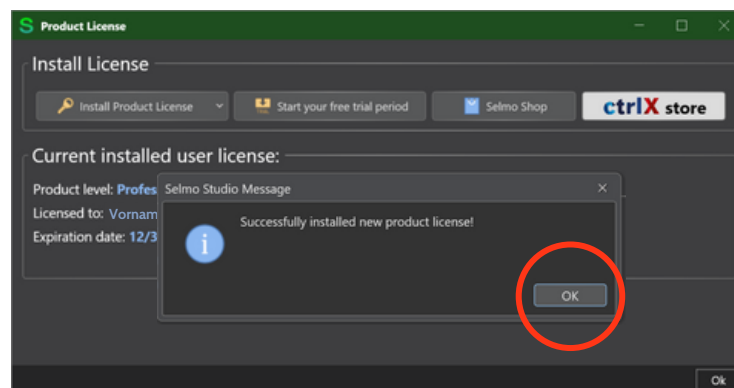
Click on "Install Product License from file".

Quick-Start

4. Registration

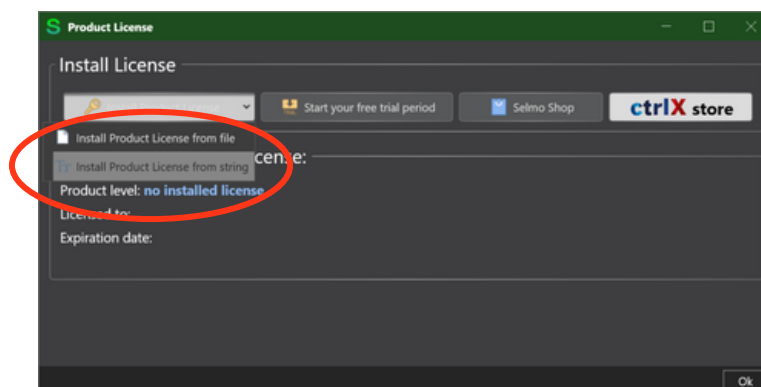


Find the "Selmo Studio Professional.bin" file and click on "Open".



Once you have successfully entered your license key, click on "OK".

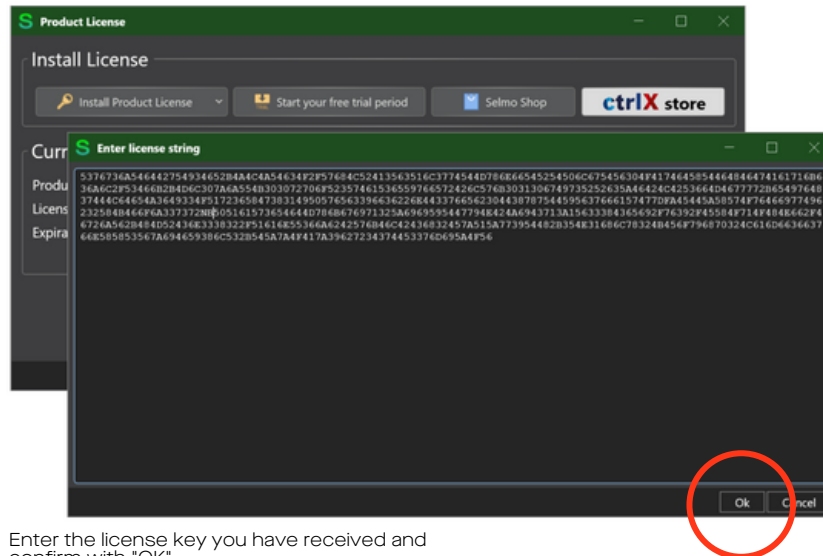
4.3 License key activation option 2: "Install Product License from string"



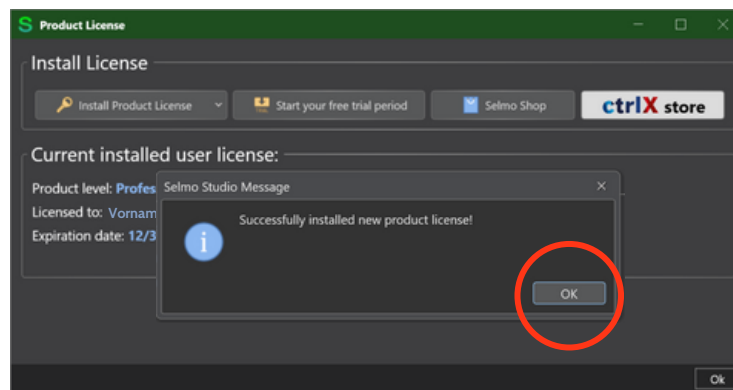
Click on "Install Product License from string".

Quick-Start

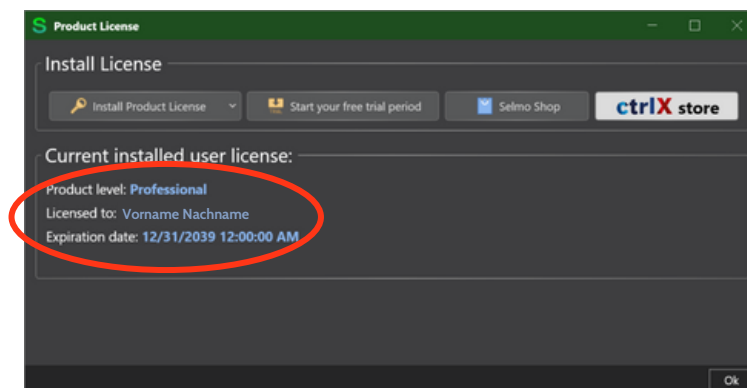
4. Registration



Enter the license key you have received and confirm with "OK".



Once you have successfully entered your license key, click on "OK".

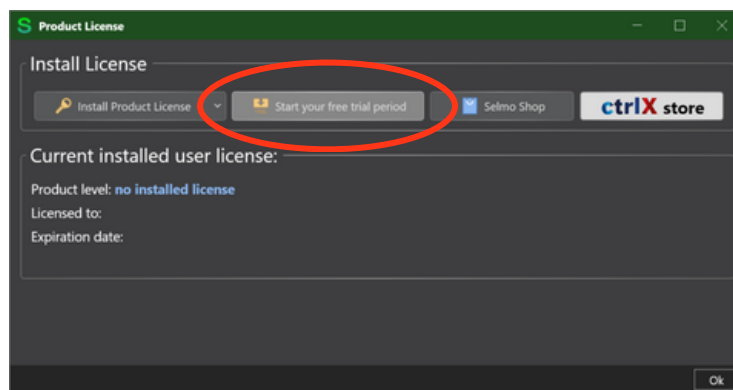


You can see your current license status here.

Quick-Start

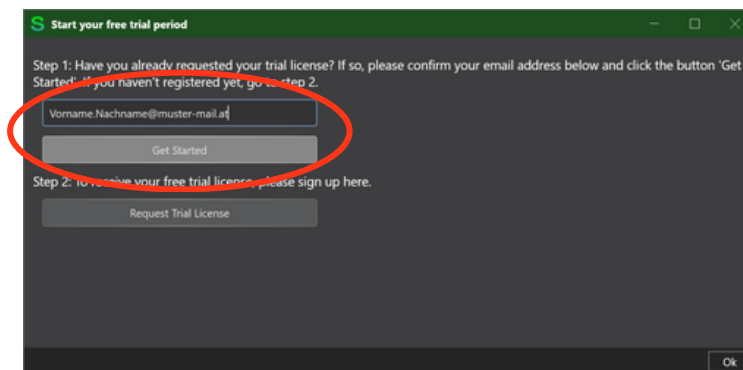
4. Registration

4.4 Trial license activation

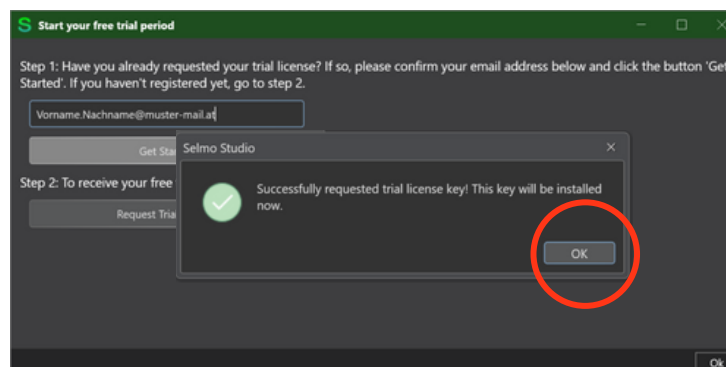


Activation of the trial license.

4.5 Trial license available - Step 1



Confirm your e-mail address here if you have already registered for a trial license on our website.

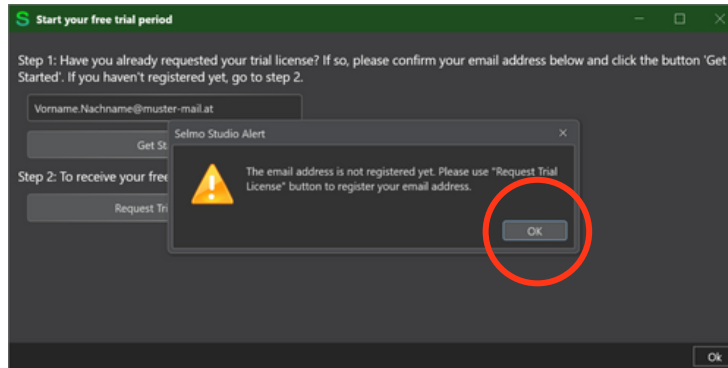


Step 1: After successfully verifying your email address, click on "OK."

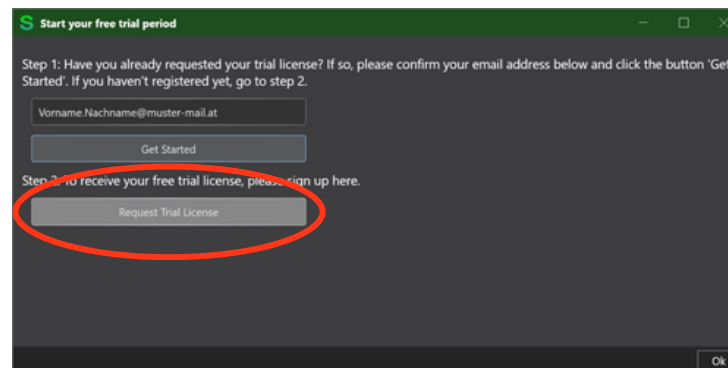
Quick-Start

4. Registration

4.6 Trial license not registered yet - Step 2



Attention: If you have not yet applied for a test license, this message will appear and you must continue with "Step 2".




You must request a trial license on our website to be able to test Selmo Studio. To do this, click on "Request Trial License".

Request your trial license

Get started right away.

With the 30-day trial license, you have the opportunity to test our solution for free.



FIRST NAME *

LAST NAME *

COMPANY *

EMAIL * PHONE *

JOB TITLE

Selmo Technology GmbH is committed to protecting and respecting your privacy and will use your personal information only to administer your account and to provide the products and services you requested from us. From time to time, we would like to contact you about our products and services, as well as other content that may be of interest to you. If you consent to us contacting you for this purpose, please tick below to say how you would like us to contact you.

I agree to receive other communications from Selmo Technology GmbH. *

You can unsubscribe from these communications at any time. For more information on how to unsubscribe, our privacy practices and how we are committed to protecting and respecting your privacy, please review our Privacy Policy.

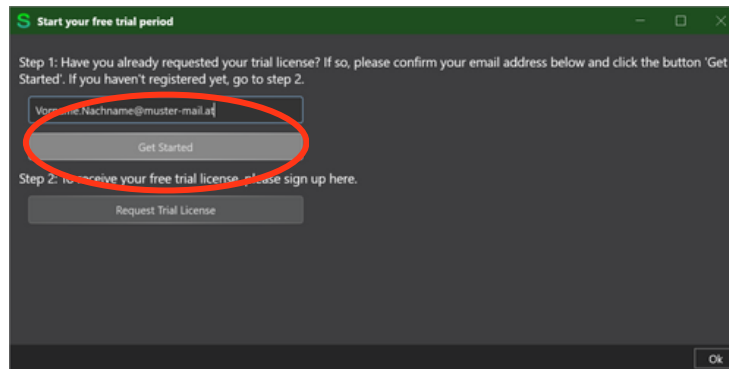
By clicking submit below, you consent to allow Selmo Technology GmbH to store and process the personal information submitted above to provide you with the content requested.

protected by reCAPTCHA

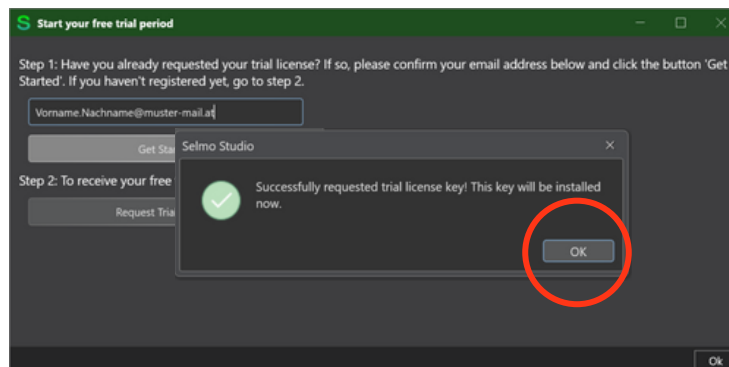
Fill out the form [here](#) and click on "Submit".

Quick-Start

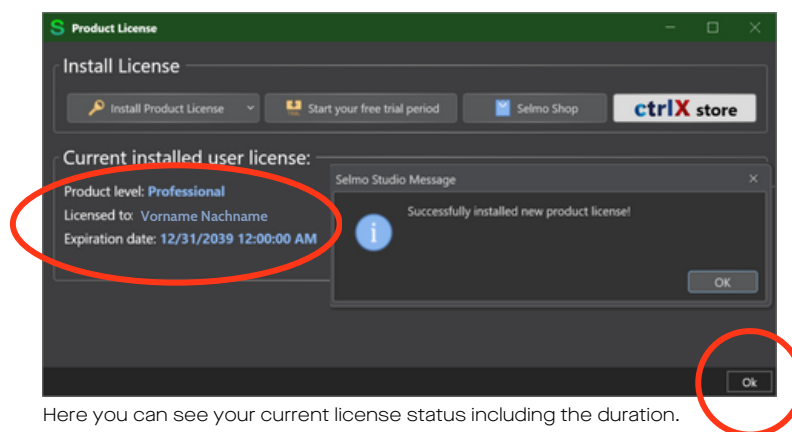
4. Registration



Step 2: After submitting the form, you can verify your e-mail address here and click on "Get Started".



Step 2: After successfully verifying your e-mail address, click on "OK".

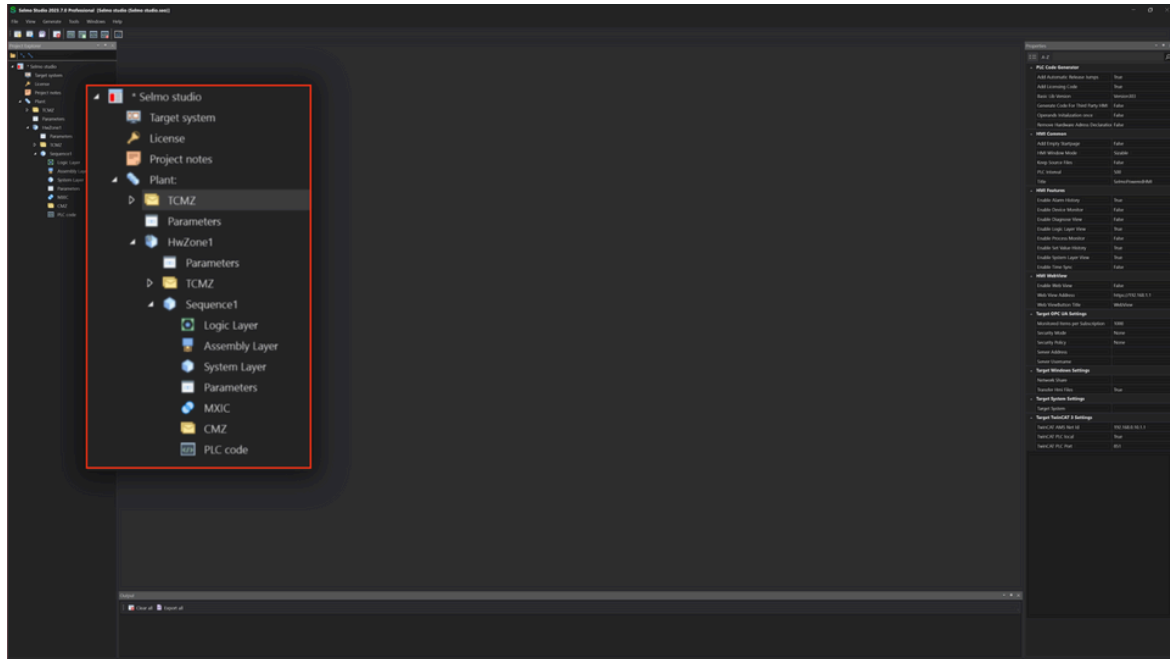


Here you can see your current license status including the duration.

Quick-Start

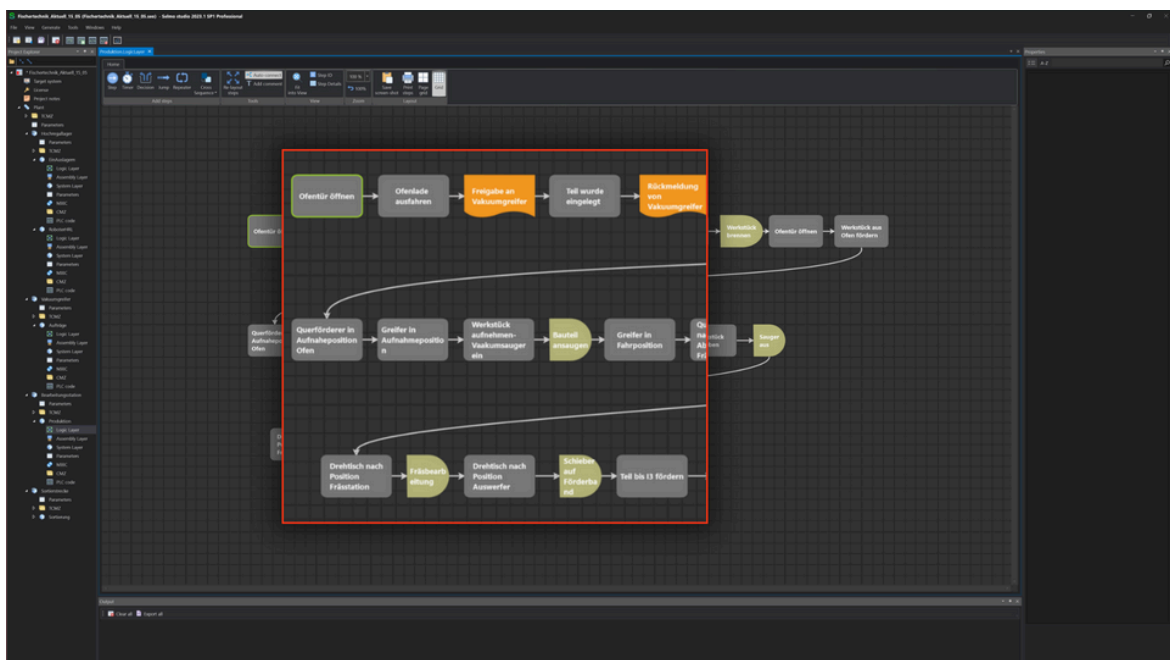
5. Main functions

5.1 Main menu



Selmo Studio main menu: The most important functions are highlighted as shortcuts in the top bar. The project explorer shows you your project, the target system, the license and the plant structure.

5.2 Logic Layer

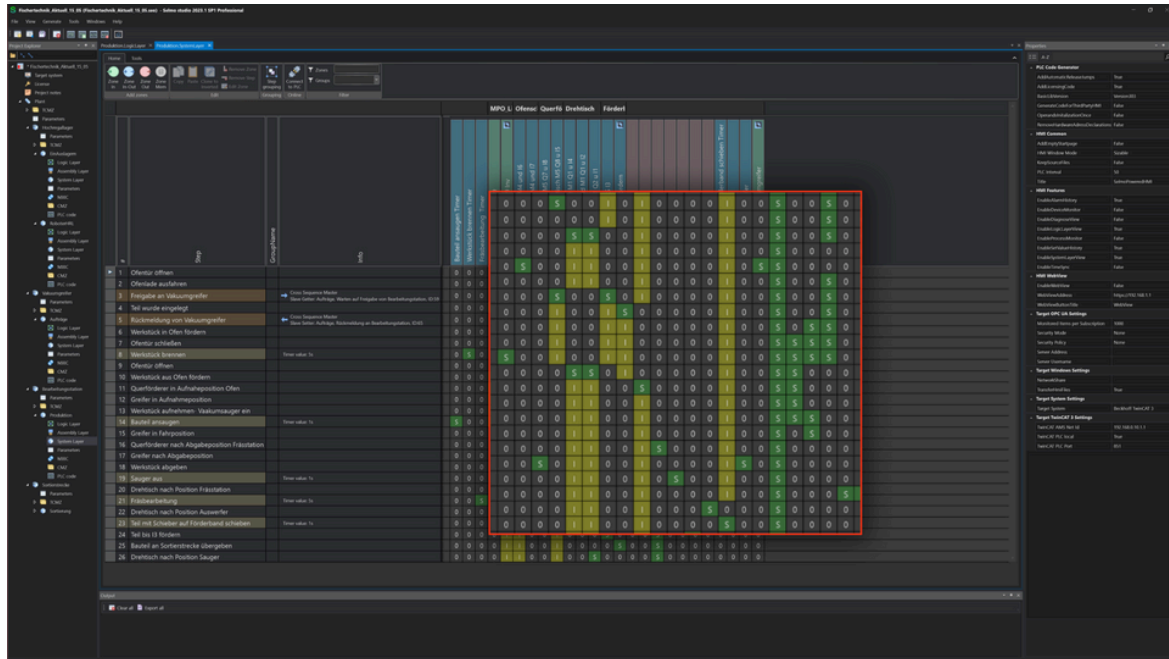


Logic Layer: The logic layer is used to pre-model the steps of the model on a graphical interface.

Quick-Start

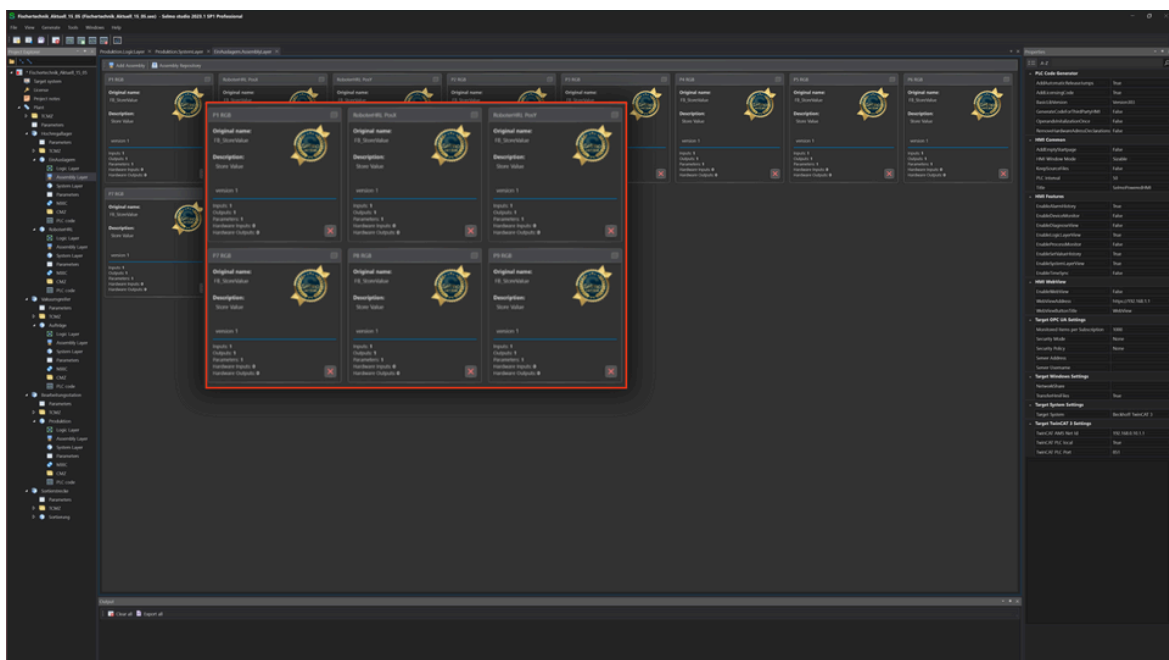
5. Main functions

5.3 System Layer



System Layer: In this area the program is modeled, the steps as well as the zones are defined and the machine states or monitoring are determined.

5.4 Assembly Layer

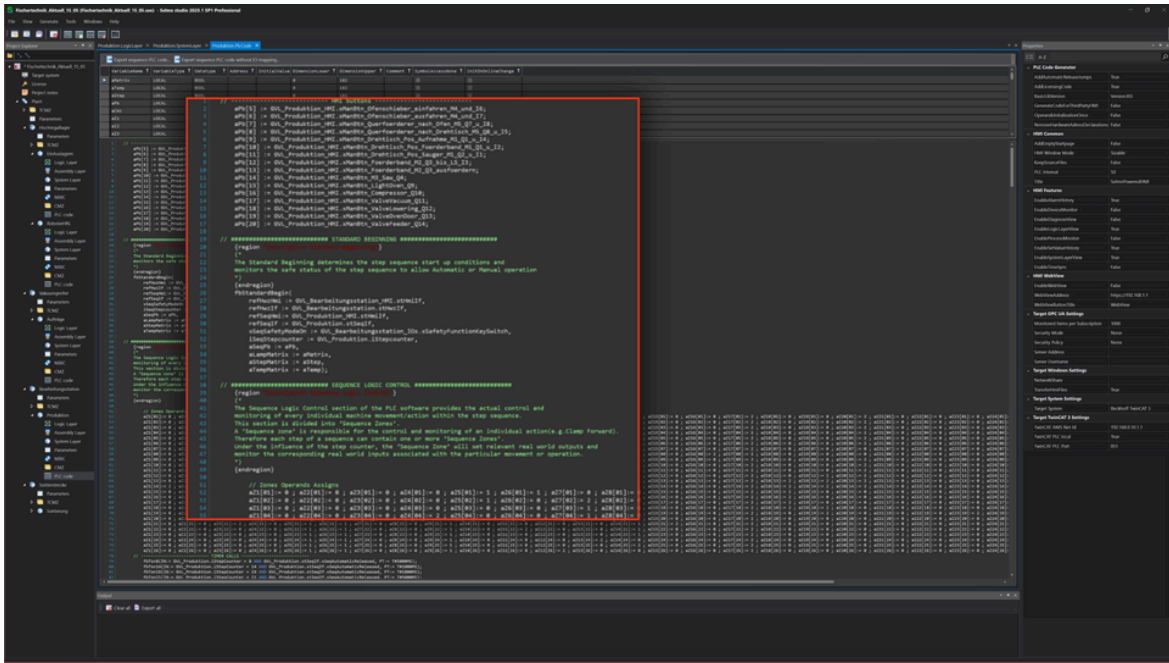


Assembly Layer: Here you can select, create or delete assemblies for your model.

Quick-Start

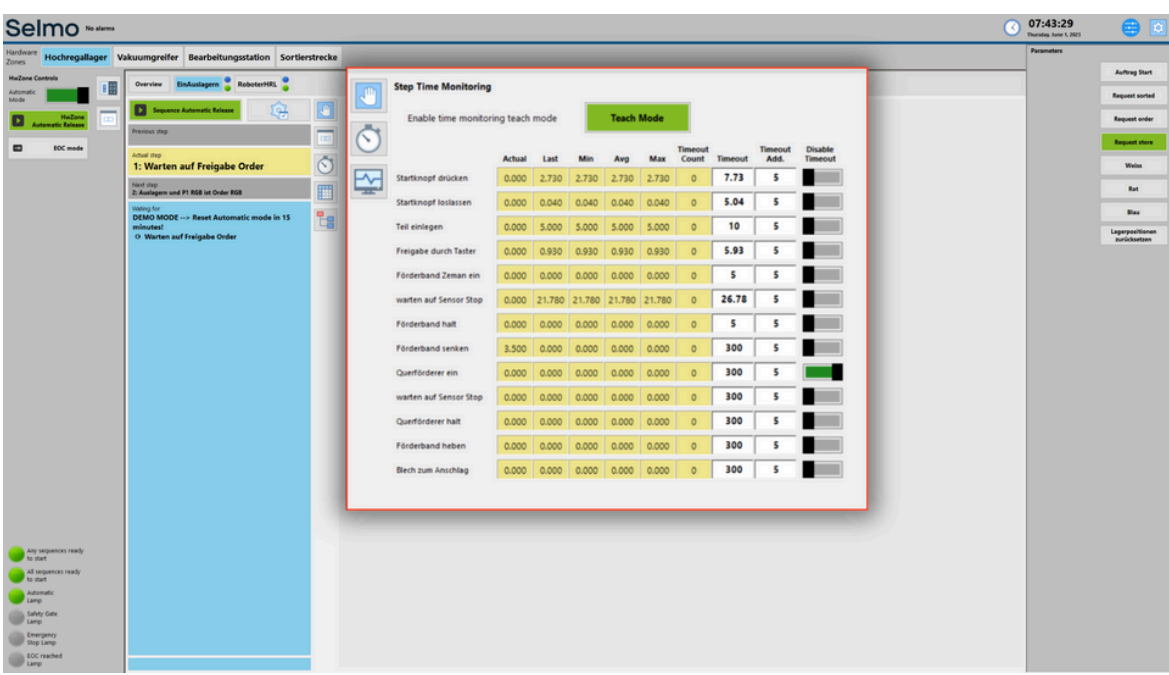
5. Main functions

5.5 PLC-Code



PLC-Code: Export function to generate a PLCopen compliant XML and import it into the selected controller.

5.6 Selmo HMI



Selmo HMI: Instead of creating each graphical component manually, you can focus on creating the process model while the HMI is generated automatically.

6.1 Selmo in Use: [Selmo in Use](#)



Selmo in Use: Selmo in Use describes every step in Selmo Studio, from project creation to application in operation. The focus is on the use of Selmo Studio, how stepping circuits and signals are modeled and defined here. The documentation refers to Selmo Studio version 2023.1 SP1.

6.2 Selmo Download Center: [Download-Center](#)



Selmo Download Center: To test the application examples, we provide you with the entire project including the virtual model, the Selmo Studio file, the generated HMI and the PLC code implemented in the operating system.

6.3 Selmo Help Center: [Help Center](#)



Selmo Help Center: This help is designed both as a course on using Selmo and as an ongoing reference while working with our modeler. You can skim it for easy reference, work through it systematically to gain in-depth knowledge, and use additional information as needed.

6.2 Selmo Academy: [Selmo Academy](#)



Selmo Academy: In our Academy you will learn the new way to model machines easier and faster. Learn the only method that takes randomness out of programming and makes machines more reliable.

Selmo Technology GmbH

Packerstraße 131a

8561 Söding-St.Johann

selmotech.com



7.1 Contact and support



E-mail: support@selmo.at
einfach@selmo.at



M: +43 3136 20755
Mo - Fr, 9:00 - 4:00 pm



[Selmo Blog](#)



[linkedin.com](https://www.linkedin.com)



[facebook.com](https://www.facebook.com)



[instagram.com](https://www.instagram.com)



[youtube.com](https://www.youtube.com)

For
software
that never
lets you
down!



selmotech.com