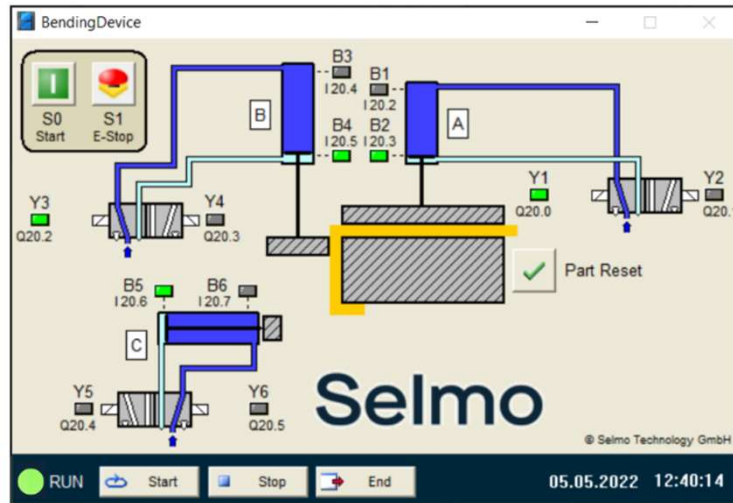


- Model Bending Device



Boris

- Functional Description

A bending device with three cylinders is used to bend a sheet. The sheet is first held over cylinder A, then the first bending operation is carried out over cylinder B (start bending) and finally the final bending is carried out over cylinder C. The cylinders are then moved back in reverse order. Pressing the emergency stop button causes all cylinders to stop immediately. Pressing the reset key in the model resets the sheet to its original shape.

## In/Output assignment

The in- and outputs of the model are assigned as follows (the designation input or output refers to the connected controller):

Input Nr.	Boris	PLC-Variable name	Specification
1	S0	I_S0 :BOOL;	Start button (closer)
2	S1	I_S1 :BOOL;	E-Stop (opener)
3	B1	I_B1 :BOOL;	Limit switch Cylinder A retracted (closer)
4	B2	I_B2 :BOOL;	Limit switch Cylinder A extended (closer)
5	B3	I_B3 :BOOL;	Limit switch Cylinder B retracted (closer)
6	B4	I_B4 :BOOL;	Limit switch Cylinder B extended (closer)
7	B5	I_B5 :BOOL;	Limit switch Cylinder C retracted (closer)
8	B6	I_B6 :BOOL;	Limit switch Cylinder C extended (closer)
Output Nr.	Boris	PLC-Variable name	Specification
1	Y1	O_Y1 :BOOL;	Cylinder A extend
2	Y2	O_Y2 :BOOL;	Cylinder A retract
3	Y3	O_Y3 :BOOL;	Cylinder B extend
4	Y4	O_Y4 :BOOL;	Cylinder B retract
5	Y5	O_Y5 :BOOL;	Cylinder C extend
6	Y6	O_Y6 :BOOL;	Cylinder C retract