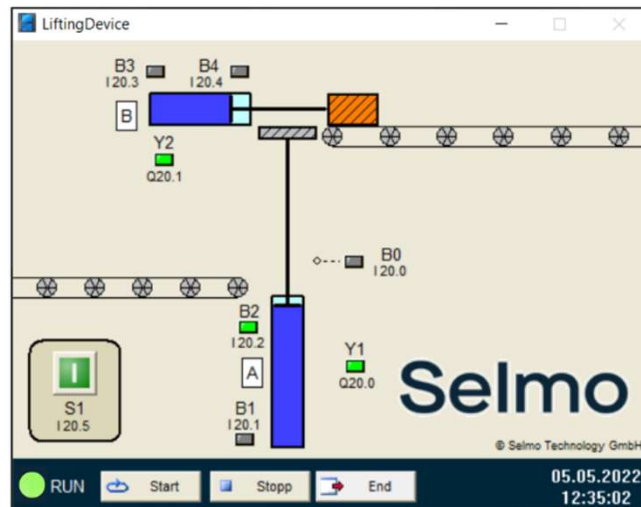


- Model Lifting Device



Boris

## • Functional Description

A package is transported - from the lower roller conveyor (left) to the end of the upper roller conveyor (right). A lifting and ejecting device is to convey the package to the other level. These devices each consist of a pneumatic cylinder with limit switches. A parts control is located directly in the lifting station. The package is released via the visualization system.

## In/Output assignment

The in- and outputs of the model are assigned as follows (the designation input or output refers to the connected controller):

Input Nr.	Boris	PLC-Variable name	Specification
1	S1	I_S1 :BOOL;	Start button (opener)
2	B0	I_B0 :BOOL;	Sensor package available (closer)
3	B1	I_B1 :BOOL;	Limit switch Cylinder 1 retracted (closer)
4	B2	I_B2 :BOOL;	Limit switch Cylinder 1 extended (closer)
5	B3	I_B3 :BOOL;	Limit switch Cylinder 2 retracted (closer)
6	B4	I_B4 :BOOL;	Limit switch Cylinder 2 extended (closer)
Output Nr.	Boris	PLC-Variable name	Specification
1	Y1	O_Y1 :BOOL;	spring return Cylinder 1 extend
2	Y2	O_Y2 :BOOL;	spring return Cylinder 2 extend
3	M1	O_M1 :BOOL;	Motor conveyor belt