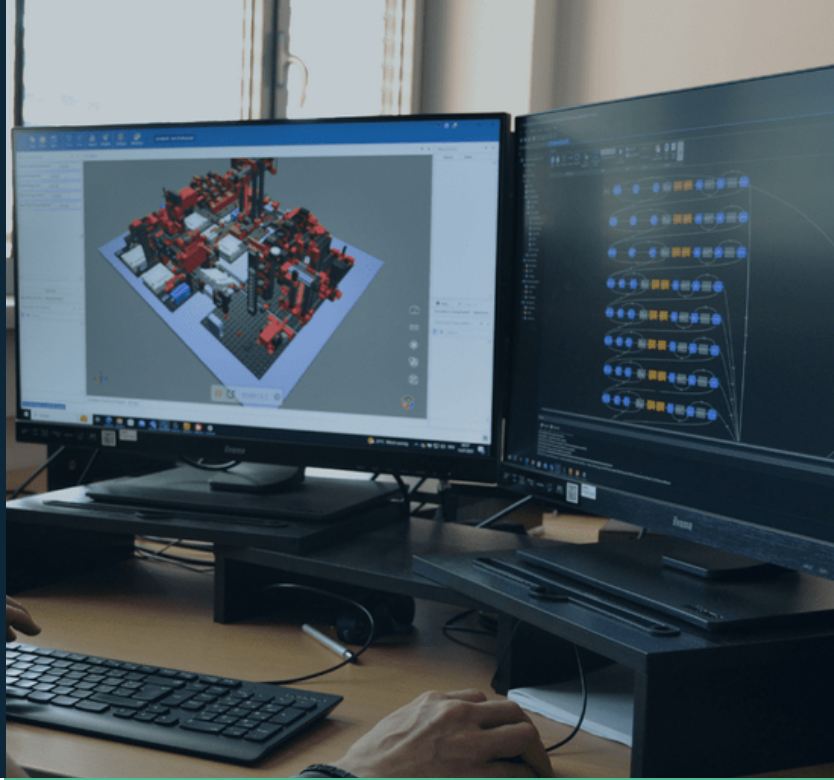


Selmo

digifai

Complete your commissioning before the hardware is even delivered.

The partnership between digifai and Selmo makes it possible.



About digifai

digifai develops software and solutions for digitization in the industry.

In the background, the company is a specialist in automation technology and has developed machines and systems and software to simulate them, evaluate data, and reduce commissioning time.

Since the team develops the products and solutions and uses them, the special requirements placed on them are well known. In addition to the technology, user-friendliness is a strong focus.

digifai has been at home in the industry for several decades and knows the special requirements of the products. Their solutions have been used numerous times in practice and have proven themselves in all industry sectors.

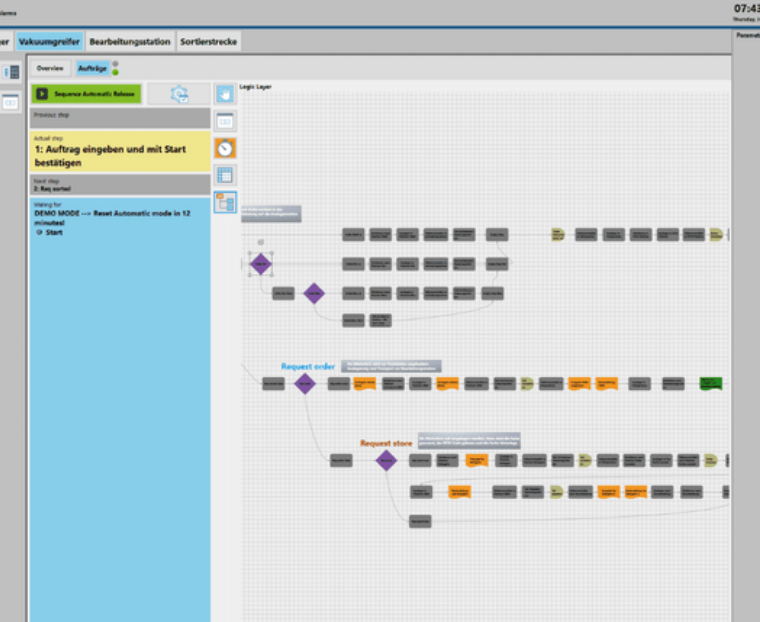
As part of our successful cooperation with digifai, the full potential of digitization is leveraged through the advanced simulation software twin.

Virtual commissioning allows for the complete testing of programming prior to hardware delivery. This enables you to identify and correct any issues before actual commissioning commences. digifai and Selmo offer unprecedented benefits and enable significant time and cost savings in commissioning industrial plants.

DI Michael Eberle, CTO of digifai, on the change in the market: "Today, machines are built more efficiently and in less time. This is only possible with end-to-end digital engineering. Efficiency in automation technology can only be increased if risks and errors are avoided at the earliest possible stage."

Contact us:
einfach@selmo.at

www.selmotech.com
Gewerbeparkstraße 1/1, 8143 Dobl-Zwaring



Benefits of virtual commissioning

- Shortened development and commissioning times
- Increased independence from the physical construction
- Shortened downtimes and project runtimes
- Possibility to test many conditions and scenarios even with complex processes
- Saving of expensive prototypes and materials
- Location-independent further development of the software possible
- Early detection of errors and limitations already during simulation

The facts

- 4 Stations
- 5 Sequences (2 of them in the high-bay warehouse)
- 261 Zones
- 274 Steps
- 87 PLC in- and outputs
- 12060 Lines of Code

The Fischertechnik Training Factory Industry 4.0 is a miniature production plant with four stations. It is designed to make Industrie 4.0 applications easier to understand and grasp thanks to its full functionality, acting like a real machine.

The simulation maps an ordering, production, and delivery process in digitized and networked steps. The plant is initially commissioned virtually using the twin simulation software before the real machine is connected.

In the Fischertechnik Training Factory Industry 4.0, workpieces of different colors can be stored in a high-bay warehouse, ordered for processing, and sorted and output. These workpieces are transported using a vacuum gripper.